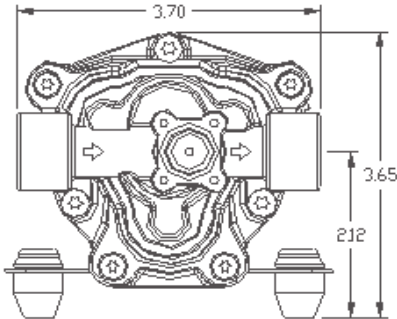


58-FLC-36

36 VDC FLOOR CARE PUMP

Flow : With #2 Nozzle: 120 PSI (8.2 BAR), 0.36 GPM (1.35 LPM)
With #6 Nozzle: 75 PSI (5.1 BAR), 0.74 GPM (2.8 LPM)
With #10 Nozzle: 45 PSI (3.1 BAR), 0.96 GPM (3.6 LPM)

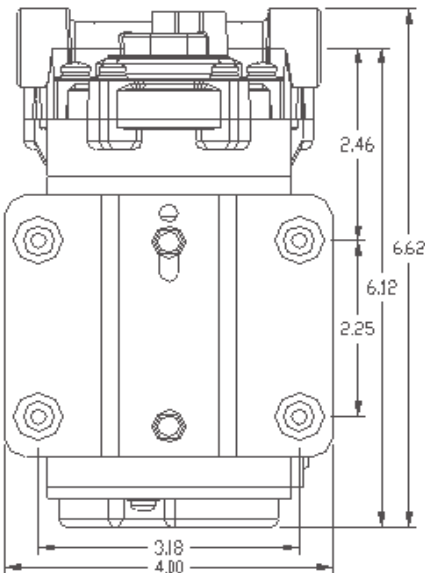


FEATURES:

Series 5800 Pump
Floor Care Applications
36 VDC Operation
3/8" NPT Female Ports
Internal Pressure Bypass
Sealed Motor to Prevent Moisture Intrusion
Steel Mounting Plate (Other Types Available)

SPECIFICATIONS:

- **MOTOR:**
 - TYPE:** 36 VDC, Permanent Magnet, Totally Enclosed, Non-Ventilated
 - LEADS:** 16 AWG, 12" LONG
 - TEMP. LIMITS:** For User Safety, Optimal Performance, and Maximum Motor Life, follow the Heat Rise Graph.
 - DUTY CYCLE:** See Heat Rise Graph
- **PUMP DESIGN:** 3 Chamber Diaphragm Pump, Self Priming, Capable of Being Run Dry
- **TYPICAL APPLICATION:** Floor Care
- **MATERIALS:**
 - HOUSINGS:** Nylon
 - VALVES:** Viton
 - DIAPHRAGM:** Santoprene
 - FASTENERS:** Stainless Steel, Zinc Plated Carbon Steel
- **LIQUID TEMPERATURE:** 170°F (77°C) Max.
- **PUMP CERTIFICATIONS:** CE, ROHS
- **PRIMING CAPABILITIES:** 8 Feet (2.5 Meters)



WEIGHT: 6 lbs.



Aquatec International, Inc.
17422 Pullman Street, Irvine, CA 92614
Sales: 949-225-2200 Fax: 949-225-2222
www.aquatec.com

58-FLC-36

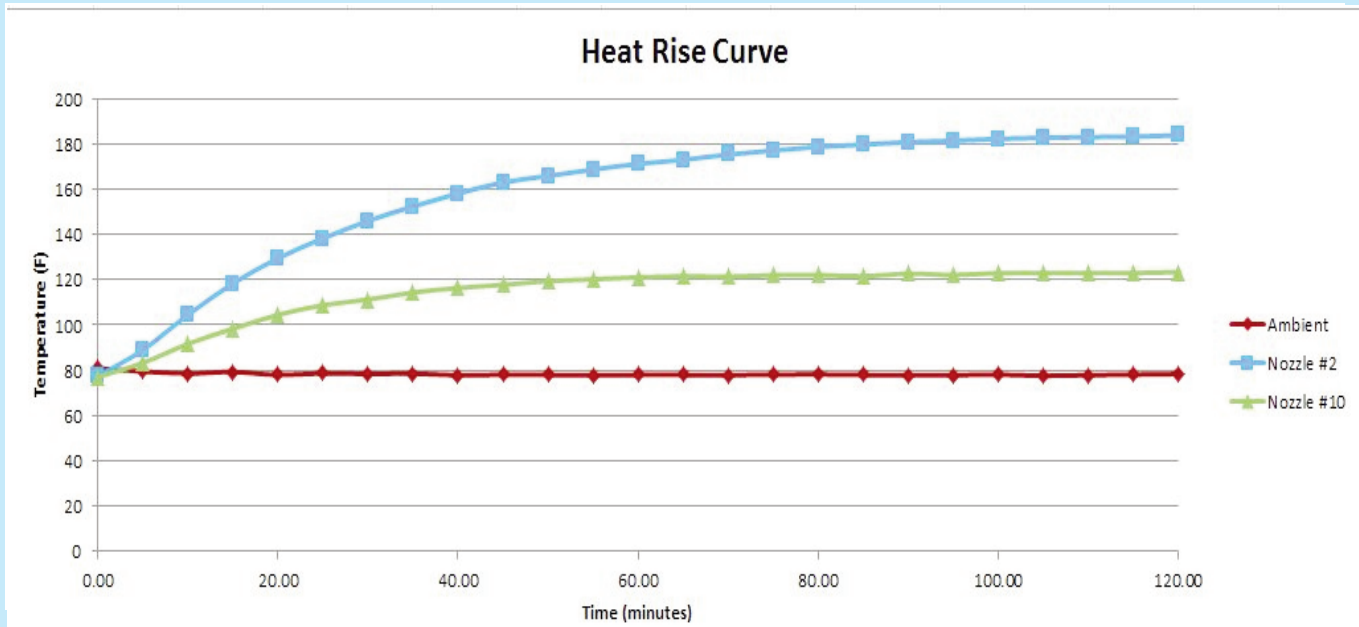
36 VDC FLOOR CARE PUMP

PERFORMANCE DATA			
NOZZLE SIZE	DISCHARGE PRESSURE PSI (BAR)	FLOW GPM (LPM)	CURRENT (AMPS)
NUMBER 2	120 (8.2)	0.32 (1.21)	2.75
NUMBER 6	75 (5.1)	0.74 (2.80)	2.08
NUMBER 10	45 (3.1)	0.96 (3.63)	1.67

PERFORMANCE MEASURED WITH FLOODED INLET (0 PSI), 70°F (21°C) AMBIENT AND WATER TEMPERATURE, AND VOLTAGE CONTROLLED AT 36 VDC. POSITIVE INLET PRESSURE WILL INCREASE THE DISCHARGE PRESSURE BY A SIMILAR AMOUNT, FOR A GIVEN FLOW. MAXIMUM INLET PRESSURE IS 60 PSI.

NOTES:

- NOT RECOMMENDED FOR NOZZLES SMALLER THAN NUMBER TWO
- REQUIRES MINIMUM SYSTEM PRESSURE RELIEF VALVE SETTING OF 225 PSI WITH HEATER EQUIPPED UNITS



ALL PERFORMANCE AND HEAT RISE FIGURES ARE APPROXIMATE. ACTUAL VALUES WILL VARY WITH AMBIENT CONDITIONS.